

| Oct 2023

THE BEGINNERS GUIDE TO SAFETY STRATEGY

LEVERAGING YOUR PHYSICAL
OPERATING COMPLIANCE DATA



TABLE OF CONTENTS

- 01** Introduction
- 02** Data for Every Role
 - 03** Environment, Health & Safety
 - 05** Fire Safety & Emergency Management
 - 07** Risk Management
 - 09** Facility / Environmental Management
- 11** Implementing Data-Driven Strategies
- 12** Strategic Questions to Ask
- 13** Digitizing Physical Compliance Data
- 14** Meet Command Center
- 15** Conclusion



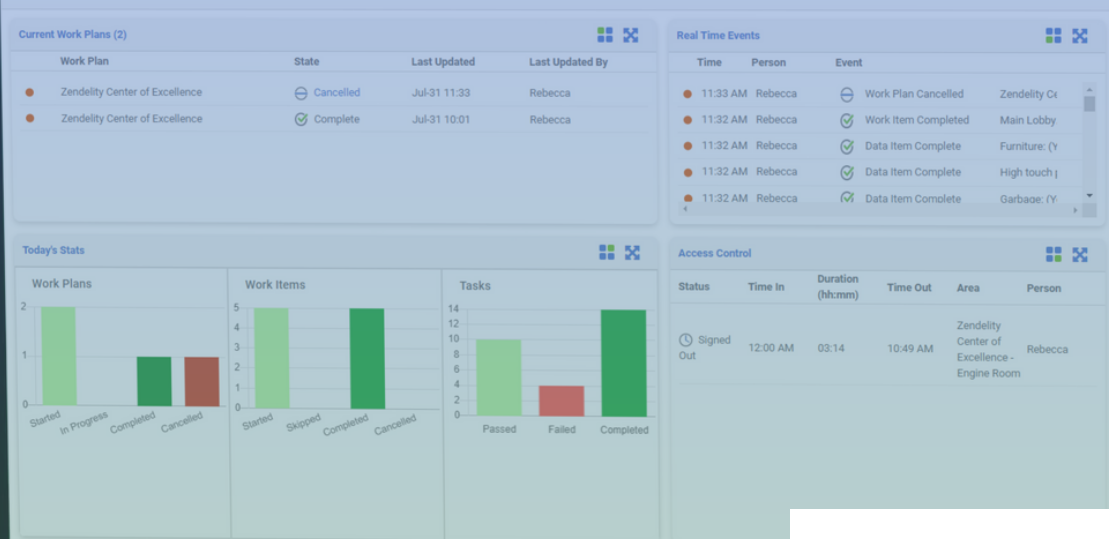


YOUR DATA HAS POWER, USE IT.

For modern business operations, compliance data is the foundation for key insight, guiding managers through the maze of safety regulations, and ensuring compliance of operational procedures. In the field of physical operations and safety management, understanding and harnessing the power of compliance data is not just a necessity; it is the cornerstone upon which efficient, safe, and resilient organizations are built.

In recent years, a transformative wave has swept through the landscape of data collection and analysis, reshaping how organizations perceive and utilize compliance data. Digital tools have revolutionized the process, providing managers in safety and operations with unprecedented opportunities for strategic enhancement. No longer confined to traditional methods, the digitization of compliance data has opened the door to a multitude of improvements, efficiencies, and innovative approaches.

In this guide, we will explore the significance of data in the realm of physical compliance and the pivotal role it plays in ensuring the safety of personnel, optimizing resource allocation, and enhancing overall operational effectiveness. Showcasing new methods to leverage your safety and operational data, we will demystify the complexities of compliance analysis and illuminate the path toward strategic operational excellence. Let's unlock the potential of your organization, one data-driven strategy at a time.





DATA FOR EVERY ROLE



Your physical operations compliance data is not a one-and-done tool for optimizing your operations. This data can transfer value to all your departments for a variety of uses.

While an EHS team may use it to understand optimal inspection routines or asset maintenance cycles, your Risk Management team could use it for improved analysis and understanding of where in your operating procedures lies increased risk to mitigate and improve.

The following section will breakdown the different uses for compliance data for each of the key roles and departments that can benefit from its improved collection and use.

This data can transfer value to all your departments for a variety of uses.



ENVIRONMENT, HEALTH & SAFETY

If anyone can reap a mountain of benefits from physical compliance data, it's EHS managers and directors. Knowing what data to track and how to analyze it is an essential component for understanding trends in issues and incidents your business may be facing, how to best allocate your budget and use resources, as well as optimize your EHS procedures and routines to maximize efficiency and compliance at all times.

Data of Value to Track & Collect

1

Incident Reports: provide insights into accidents, near misses, and hazards, helping identify trends and potential risks.

- implement preventive measures
- enhance training programs
- reduce the recurrence of incidents

2

Safety Inspection Records: highlight compliance with safety regulations and identify areas needing improvement.

- prioritize corrective actions
- ensure compliance
- maintain a safe environment

3

Training Records: track employee certifications and knowledge levels to ensure everyone is equipped with necessary skills.

- identify gaps in training
- schedule targeted sessions
- monitor staff preparedness for emergency situations





ENVIRONMENT, HEALTH & SAFETY

4

Equipment Maintenance Logs: track the upkeep of safety equipment and machinery, ensuring they function optimally.

- schedule timely repairs
- reduce downtime of safety assets
- prevent equipment-related incidents

5

Emergency Response Plans & Drills: assess the organization's preparedness for various scenarios.

- identify gaps in emergency response
- improve evacuation procedures
- ensure swift, effective responses during crises

6

Regulations Compliance Documentation: ensures the organization is in compliance to local, state, and federal laws.

- assess the organization's legal standing
- address compliance gaps
- avoid regulatory penalties

7

Near-Miss Reports: highlight potential accidents that were narrowly avoided, offering opportunities for preventive measures.

- identify root causes of issues
- implement corrective actions
- prevent future incidents

8

Environmental Impact Data: impact of campus operations is crucial for building and tracking sustainability initiatives and ensuring environmental regulatory compliance.

- reduce the organization's carbon footprint
- conserve resources and limit waste
- comply with environmental regulations

FIRE SAFETY & EMERGENCY MANAGEMENT

Fire Safety & Emergency Management professionals can gain a lot from effectively analyzing their physical compliance data, as it can have drastic effects on their ability to manage safety assets, equipment, and procedures while optimizing their ability to prevent incidents and emergencies in the first place.

Data of Value to Track & Collect

1

Incident Reports: provide details about fire incidents, helping identify causes and vulnerabilities.

- enhance fire prevention measures
- update emergency response plans
- conduct targeted staff training

2

Records of Evacuation Drills and Response Times: assess the efficiency of evacuation procedures during emergencies.

- prioritize corrective actions
- ensure compliance
- maintain a safe environment

3

Fire Systems Performance Data: provides insights into the reliability of safety equipment.

- schedule regular system checks
- ensure timely repairs
- minimize false alarms to maintain the system's effectiveness





FIRE SAFETY & EMERGENCY MANAGEMENT

4

Equipment Maintenance Logs: track the upkeep of safety equipment and machinery, ensuring they function optimally.

- schedule timely repairs
- reduce downtime of safety assets
- prevent equipment-related incidents

5

Emergency Equipment Inventory: ensures availability and proper functioning.

- schedule regular maintenance
- replace expired items
- guarantee the readiness of emergency supplies

6

Fire Safety Inspection Logs: provide evidence of compliance and system reliability.

- assess the organization's legal standing
- address compliance gaps
- avoid regulatory penalties

7

Communications Systems Performance (alarms, intercoms, etc): ensures reliable communication during emergencies.

- identify weak points
- enhance coverage
- ensure effective communication among emergency responders

8

Environmental & Weather Data: inform the potential impact of natural disasters and environmental emergencies.

- prepare for weather-related emergencies
- reinforce vulnerable areas
- educate the campus community about specific risks associated with weather conditions



RISK MANAGEMENT

A Risk Manager without their data is just... a really good guesser, but guessing doesn't prevent incidents or mitigate risk at all. Working with numerous departments, it's important to ensure that the data collection-to-analysis process is as efficient and organized as possible, so that risk managers have enough information to work with to do what they do best. Manage risk, and save lives.

Data of Value to Track & Collect

1

Claim Data: provides insights into the types of incidents occurring on campus, helping identify trends and areas of high risk.

- implement preventive measures
- assess liability risks
- allocate resources effectively to reduce the occurrence of incidents

2

Contract & Vendor Data: highlights potential liabilities and ensures compliance with contractual obligations.

- assess vendor performance
- mitigate contract-related risks
- negotiate better terms to enhance overall campus safety

3

Insurance Coverage & Claims History: outlines coverage details and historical claims, aiding in risk assessment and policy optimization.

- tailor insurance coverage
- negotiate premiums
- proactively address areas prone to incidents, thereby reducing claim frequencies



RISK MANAGEMENT

4

Property & Asset Records: help in assessing vulnerabilities, maintenance needs, and replacement costs.

- communicate priority maintenance efforts to team
- assess replacement timelines to limit risk
- ensure that assets meet safety standards to prevent accidents

5

Compliance Data: ensures adherence to regulatory requirements, reducing the risk of legal issues and penalties.

- conduct regular audits,
- address compliance gaps
- maintain documentation, ensuring adherence to laws and regulations

6

Employee Training Records: highlight the level of preparedness among employees, ensuring everyone is equipped to handle emergencies.

- identify gaps
- schedule targeted sessions
- ensure that staff are well-versed in emergency protocols and safety procedures

7

Emergency Response Plans & Drills: assess the organization's preparedness for various scenarios.

- improve emergency response plans
- identify areas of improvement
- ensure seamless coordination between departments during crises

8

Building Inspection Reports: detail structural integrity and safety features.

- address structural weaknesses
- ensure fire safety measures
- maintain compliance, reducing risks related to building safety

***Pro Tip: Synergize with Operations teams to ensure needed data gets collected.**

FACILITY / ENVIRONMENTAL MANAGEMENT



Ensuring property and facilities are operational, efficient, and compliant with safety regulations is just the cherry on top of all the responsibilities for Facility & Environmental Managers. It can take a lot of work to execute this role, which is why efficiently collecting and using the right data can transform activities from reactive to proactive, in the easiest way possible.

Data of Value to Track & Collect

1

Energy Usage Data: helps identify consumption patterns, leading to cost savings and environmental sustainability.

- optimize usage and save costs
- implement the right energy-efficient technologies
- reduce the campus's carbon footprint

2

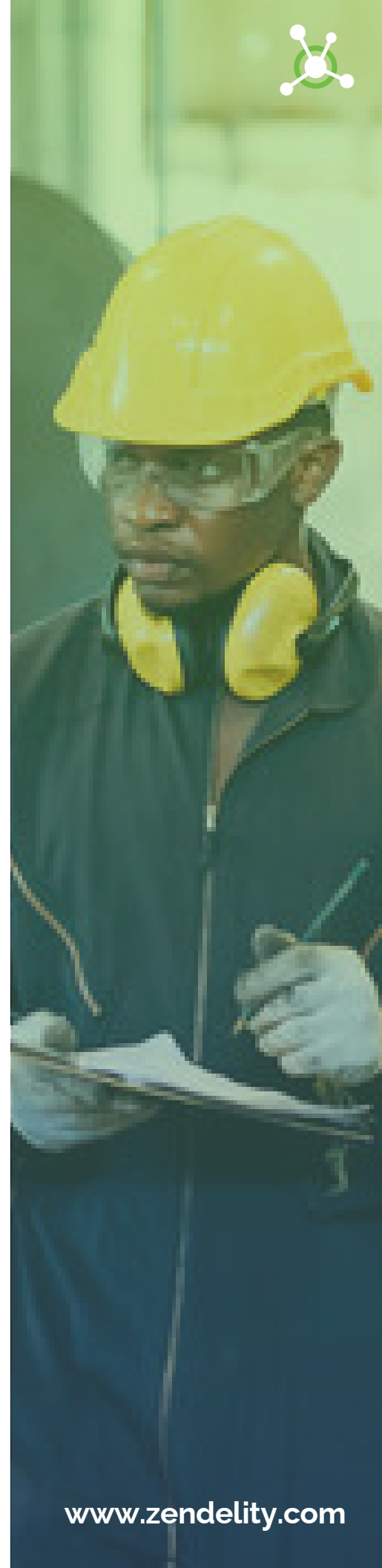
Indoor Air Quality Metrics: impact the health and well-being of occupants, influencing productivity and satisfaction.

- identify pollutants
- improve ventilation systems
- maintain a healthy indoor environment

3

Space Utilization & Occupancy Data: helps optimize space allocation, leading to efficient use of facilities and resources.

- redesign layouts
- optimize room allocations
- create more functional and comfortable spaces





FACILITY / ENVIRONMENTAL MANAGEMENT

4

Water Consumption Data: aids in water conservation efforts and ensures compliance with environmental regulations.

- identify leaks
- promote water-saving initiatives
- ensure the efficient use of water resources

5

Waste Generation & Recycle Rates: assists in waste management strategies, recycling efforts, and meeting sustainability goals.

- reduce landfill waste
- improve recycling rates
- develop eco-friendly waste management programs

6

Maintenance & Repair History: provide insights into equipment reliability, repair frequency, and potential risks.

- schedule preventive repairs
- reduce downtime
- prevent equipment failures that may pose safety hazards

7

Safety Inspection & Incident Reports: help identify safety hazards and areas for improvement.

- prioritize safety measures
- conduct targeted training
- prevent accidents by addressing potential risks

8

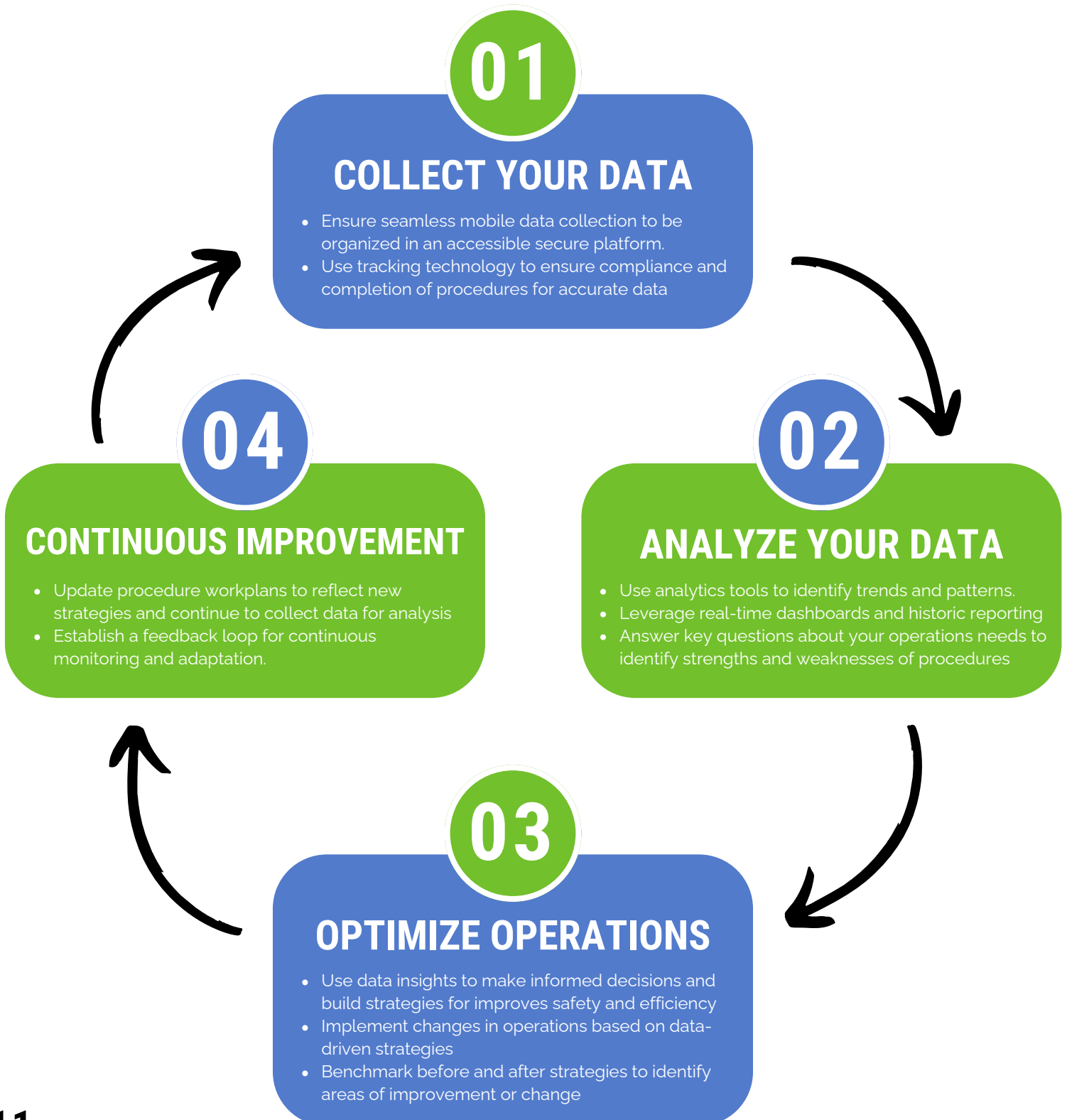
Green Building Certifications & Compliance Data: showcases the campus's commitment to sustainability and environmental responsibility.

- maintain compliance records
- implement eco-friendly initiatives
- apply for green certifications, enhancing the campus's environmental reputation



IMPLEMENTING DATA-DRIVEN STRATEGIES

Using the Compliance Cycle





DATA-DRIVEN STRATEGY

QUESTIONS TO ASK

EHS MANAGERS:

- What types of incidents are most common on our campus?*
- Are there specific areas or departments with a higher incident rate?*
- What patterns or trends can be identified from historical incident data?*
- What compliance metrics are most critical for our campus?*
- Are employees actively reporting safety concerns?*

QUICK TIP:

Want to share each department's guides with your teams? Click on their title!

FIRE SAFETY & EMERGENCY MANAGERS:

- What are the gaps in emergency preparedness, and how can they be addressed?*
- How can response times be optimized based on historical data?*
- Are there bottlenecks in the emergency response process that need addressing?*
- How can past emergency scenarios inform training and support new procedures?*
- What are the most common emergency scenarios on the campus?*

RISK MANAGERS:

- Are there patterns indicating liability risks in specific areas?*
- How can historical claim data inform proactive risk mitigation strategies?*
- What policy violations or breaches are most common, and how can they be reduced?*
- How can external risk data be integrated into campus risk assessments?*
- What preventative measures can be taken to reduce reliance on insurance claims?*

FACILITY & ENVIRONMENTAL MANAGERS:

- How can energy and resource data be used to reduce costs and enhance sustainability?*
- Are there specific locations or assets with consistently higher maintenance needs? How can this data inform preventive maintenance schedules?*
- What trends in waste generation and recycling rates can guide eco-friendly initiatives?*
- What are the common facility concerns raised by visitors or staff?*



DIGITIZING YOUR PHYSICAL COMPLIANCE DATA SYSTEM

Before jumping into a new system to digitally transform your physical compliance management and start collecting and analyzing data to optimize operations, you must ensure the system you choose is, or can be, tailored to your procedures and fulfill the key needs of your physical operations and compliance. From user-friendliness to scalability, there are a multitude of features to consider, but to start, ask yourself these **4 essential questions** when deciding which digital transformation solution would be best for your business.



No. 01 — How does it ensure work gets done?

Without NFC or other tracking technology, the solution is no different than a paper checklist. This leaves managers only hopeful that procedures have been completed to standard and that no issues of non-compliance or other were present during the inspection or task.



No. 02 — Is data collection standardized?

Ensuring the system enables you to customize the fields for data collection so they are relevant to your policies and operating needs is key to facilitate data analysis and ensure procedures are standardized no matter the worker or when it's performed?



No. 03 — Are workflows user-friendly?

Reporting procedures should take minimal time and effort for your mobile workers. The more you can modify the workflow process for your employees, such as setting up sequenced vs ad-hoc workplans, the better it is for your workers to enjoy the compliance process and ensure they complete to standard.



No. 04 — Does it include a dashboard?

Dashboards are the backbone for data beginners as they provide a full summary of all your physical operating trends, issues, and more, all in one easy to view space. If that data is presented in real-time, even better to help managers keep a consistent and updated awareness over physical operations and assets.









MEET COMMAND CENTER

Command Center is SaaS-based grab-and-go technology that combines the flexibility of near-field communications (NFC) technology with the smartphone to cost-effectively ensure adherence to all daily physical operating requirements associated with health & safety, fire code, environmental, commercial insurance, brand standards, etc. It's the only solution to provide a single version of the truth regarding operations and provide access to real-time, accurate operating data that can be used to increase efficiencies, reduce overall risk and help save lives, money, and time.



Eliminate All the Paperwork Required to Keep the Doors Open.

- Create **unlimited standardized work plans** based on your compliance calendar.
- Design workflows to collect data tailored to your **sequenced or ad-hoc** operations.
- Use **real-time dashboard and historic reporting** to identify trends in issues and compliance.
- Directly link to specific assets or locations for **end-to-end life cycle management** using Near Field Communications Technology
- **Optimize operations** with more efficient reporting and response process

	OPERATING PROCEDURES		EMERGENCY RESPONSE
	INSPECTIONS & AUDITS		INCIDENT REPORTING
	OPERATING PERMITS		ASSET MANAGEMENT

BECOME A COMPLIANCE DATA SUPERSTAR

Data can be a scary beast to tackle when first presented with piles on piles of numbers and records, but with a bit of time, an organized management system, and procedures that are setup to collect the data you want, however you want, you'll be moving from beginner to superstar in no time!

There are countless opportunities to enhance your physical operations and improve the physical safety of your business, you just need the right solution to support your goals, and alleviate the burden traditional methods of data collection and analysis would create.

The future is digital, and Command Center is THE solution to give you those opportunities to build data-driven solutions, eliminate risk, and ensure compliance every step of the way so that you can better save money, save time, and above all, save lives.

Want to start your physical compliance data transformation?

Message us and learn about our different packages and offers today!

CONTACT US

www.zendelity.com

info@zendelity.com

613-369-4330

Suite 202, 308 Legget Drive,
Kanata, ON, K2K 1Y6, Canada
Zendelity Corporation © 2023

